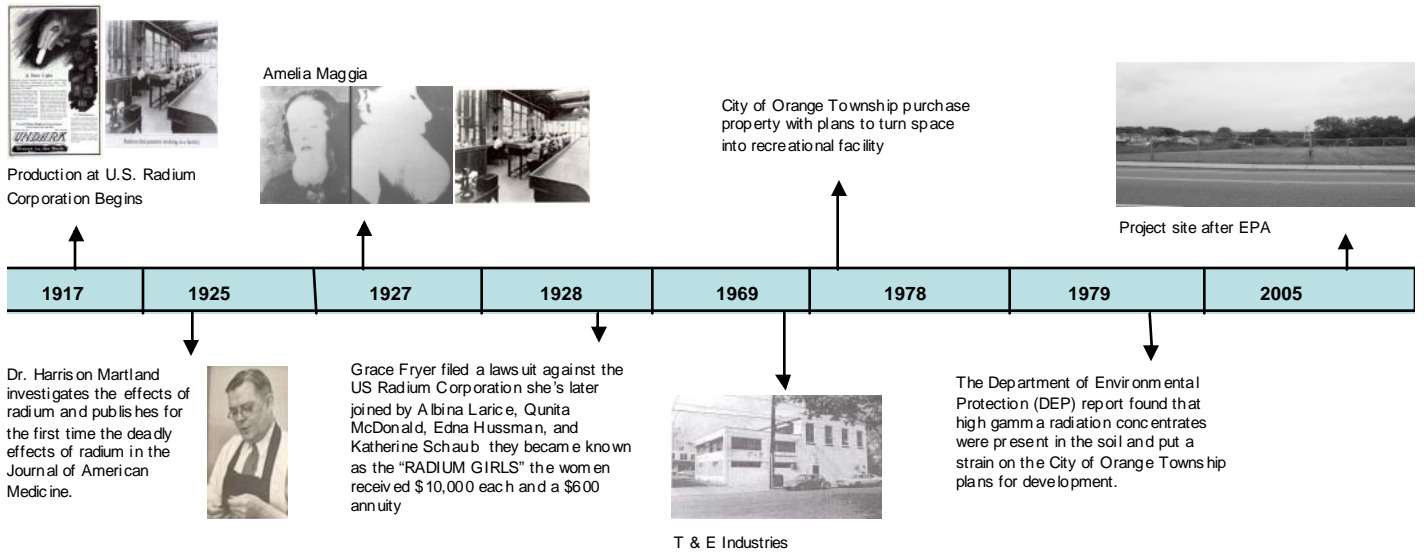
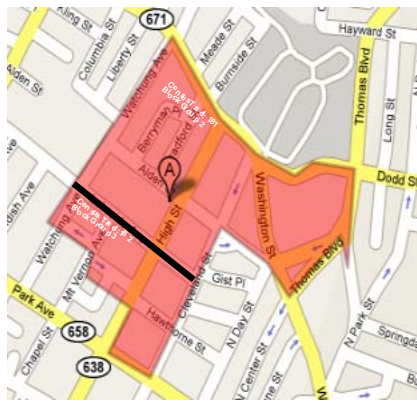


ALDEN & HIGH STREET PLANNING URBAN PLANNING STUDY

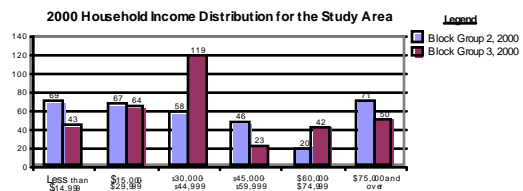
Goal 1: Characterize the History of the Site.



Goal 2: Define Uniqueness of People Who Reside in the Neighborhood.



	City of Orange Township 2000	Percentage of Study Area to City Of Orange Township	Study Area 2000	Percentage of Study Area 2000	Percent Change of Study Area 1990 and 2000
Total Population	32,868	6%	1,968	100%	10%



Goal 3: Conduct an Assessment.



Park Classification	Acres/1,000 persons	Acres Needed	Existing Acres	Surplus or Deficiency
Pocket Park	0.25-0.50	0.5-1	2	1.5,1
Neighborhood Park	1.0-2.0	2-4	4	2,(0)
Community Park	5.0-8.0	10-16	2	(-8),(-14)

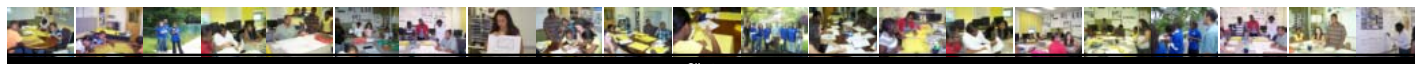
* Based upon U.S. Census Bureau 2000 study area population of 1,968 and is rounded to the nearest 1,000.

Residential Development Near Project Site



Goal 4: Research Natural Resources for Project Site.

Resources	WATER	WILDLIFE	VEGETATION
Issues	Project Site connects to the Atlantic Ocean	The Mallard ducks live in the area. Fish live in Non-Source Pollution.	Attracts insects which may fall into Wigwam Brook and can be a food source for fish.



ALDEN & HIGH STREET PUBLIC HEALTH STUDY

Goal 1: Decrease health disparities in minorities relating to physical activity.



Connecting Goal: Improve health, fitness, and quality of life through daily physical activity. Healthy People 2010 challenges individuals, communities, and professionals indeed, all of us to take specific steps to ensure that good health, as well as long life, are enjoyed by all.

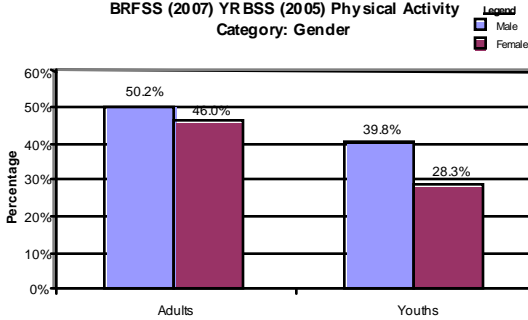


Connecting Goal: To decrease disparities in obesity and increase healthy eating and physical activity across the lifespan among high risk groups (including Black and Hispanic populations and those with low socioeconomic status) in New Jersey.

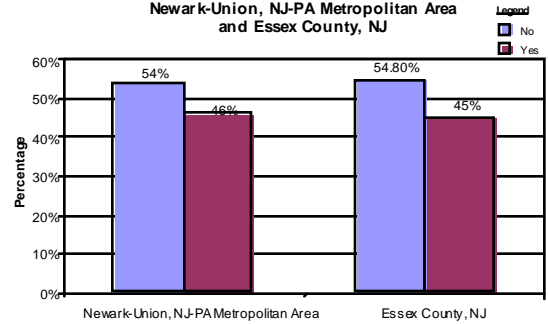
Adults: Adults with 30+ minutes of moderate physical activity five or more days per week, or vigorous physical activity for 20+ minutes three or more days per week.

Youth: Students who engage in moderate physical activity for at least 60 minutes per day on most days.

BRFSS (2007) YRBSS (2005) Physical Activity Category: Gender



Newark-Union, NJ-PA Metropolitan Area and Essex County, NJ



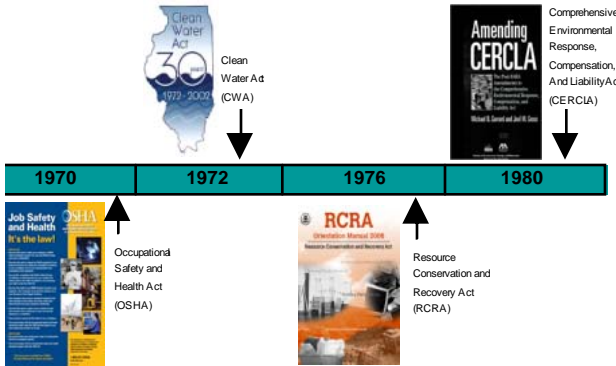
Gender Issue:

• On the State Level, youth males and adult males engage in more physical activity than females whether its moderate or vigorous with more than 50%.

Issue:

• Over 50% of adults on both the Metropolitan and Micropolitan levels responded no to participating in moderate or vigorous physical activity.

Goal 2: Increase environmental awareness and physical activity in the neighborhood.



Student Interns Working on Design Charette

Goal 3: Develop recommendations for the creation of a park that will increase physical activity and quality of life.



Scenic Hudson Park in Irvington, NY.

Case Study 1: Scenic Hudson Park

Former industrial site was turned into a 12-acre waterfront park.

New Yorkers are taking their turn to reclaim useful land. Residents are able to engage in more physical activity with the:

- baseball
- softball
- soccer
- football field
- restrooms



Ping Tom Memorial Park in South of Downtown Chicago

Case Study 2: Ping Tom Memorial Park

The park was divided into two parts:

•The first part is a passive park that includes traditional Chinese gardens, a walking trail, a riverfront pavilion and a children's playground.

•The second part of the park will consist of more active recreation uses, including a field house, swimming pool and ball fields.



Riverside Park in Lewiston, Maine

Case Study 3: Riverside Park

•It was an abandoned gas plant turned into a public riverside park.

•We should keep the public informed by public meetings and newspaper articles.

•Keep the neighborhood informed on where we are with creating our park.



Prepared by:
Community Technical Assistance, Inc. (CTA)
7 Glenwood Avenue, Suite 407, East Orange, NJ, 07017
Office: 973-395-0775 Fax: 973-395-1134
www.cta-usa.com

Client:
CITY OF ORANGE TOWNSHIP
Mayor Eldridge Hawkins, Jr.
City Orange Township City Council

Prepared for:
City of Orange Department Recreation
City of Orange Division of Housing and Community Development
Essex County Division of Housing and Community Development

PARTNERS: Essex County Division of Housing and Community Development, City of Orange Township, City of Orange Township Recreation Department, City of Orange Township Planning and Development Department, Orange Board of Education, City of East Orange Youth 2000 Initiative, City of East Orange Board of Education, Neighborhood Planning and Architectural Design, Inc., Prudential Foundation, YWCA Essex and West Hudson, New Jersey Department of Labor and Workforce Development, Essex County Environmental Center, Frank H. Lehr Associates

ALDEN & HIGH STREET PLANNING RECOMMENDATIONS/VISION

Pedestrian Hierarchy



Perspective Street View



Perspective of US Radium Corporation Historical Memorial



US Radium Corporation Historical Memorial



Perspective of Grace Fryer Monument



Water Feature at rear of Grace Fryer Monument

Cultural and Walking Recommendations



Aerial of Proposed Cultural and Educational Literacy Center

I Pedestrian Hierarchy Recommendations

Goal 1: Emphasize Pedestrian Hierarchy.

Design Solution: Signage and traffic calming devices such as traffic lights, stop signs, warning lights, crosswalk, intersection circle and rumble strips.

Goal 2: Traffic Calming devices.

Design Solution: Signage and traffic calming devices such as traffic lights, stop signs, warning lights, crosswalk, intersection circle and rumble strips.

II Historical Recommendations

Goal 1: Identify the workers at the US Radium Corporation and those who died from radium poisoning.

Design Solution: Memorial or plaques to commemorate the workers.

Goal 2: Identify the findings of Dr. Harrison Martland.

Design Solution: Engrave quotes from Dr. Harrison Matlands findings on the Journal of American Medicine.

Goal 3: Identify if the US Radium Corporation operated at any other site.

Design Solution: Incorporate images of the US Radium Corporation that was located on Alden and High St.

Goal 4: Identify other companies that operated at the former US Radium Corporation site.

Design Solution: Build replicas of products produced by the other companies.

Goal 5: Historical

• Increase the quality of life on how people look at their community.

Design Solutions:

• Increase the awareness of the site's history and prevents future health problems and deaths.

• Increase the awareness and appreciation of the area's rich history.

III Cultural and Walking Recommendations

Goal 1: Reflect the culture of the people through design.

Design Solution: Art and literature

Goal 2: Increase literacy by providing a GED Program.

Design Solution: Learning Facility.

Goal 3: Create more options to walk

Design Solution: Provide a walking track

Goal 4: Cultural

• To increase the percentage of the adult black population engaging in physical activity by 10%.

• Increase the quality of life on how people look at their community.

Design Solutions:

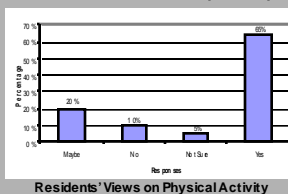
• Promotes closer ties between cultures.

• Provides opportunities for a culture to learn more about themselves through an assortment of activities

• Quality of Life and Physical Activity Survey results, 45% of the residents living in our project area believe that their neighborhood lacks cultural activities.

IV Track & Safe Conditions for Walking/Bicycling & Open Space & Restrooms Recommendations

Do you think you would engage in more physical activity if you had better access to improved parks?



Residents' Views on Physical Activity



Site Plan of US Radium Corporation Historical Memorial



Site Elements for Pedestrian Hierarchy



Site Plan of the Grace Fryer Monument



Site Elements for Memorial



Site Plan



Site Elements for Cultural and Walking



Track & Safe Conditions for Walking/Bicycling

Restrooms Recommendations