



# Friendship African Methodist Episcopal Church

Browns Mills, New Jersey 08015

Rev. Kim. Anderson, Pastor

PROJECT 2010

Regina Thomas, Project Manager



RESOURCE SPACE STUDY



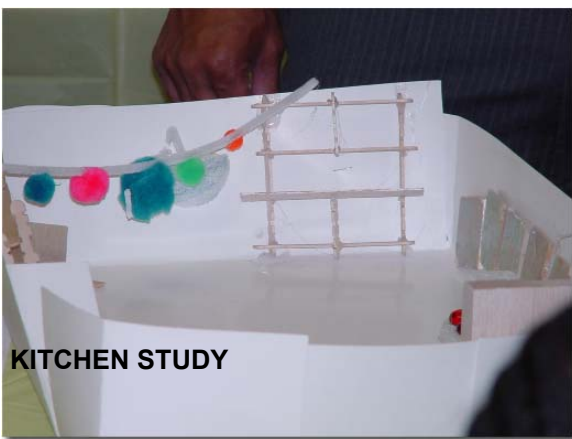
RESOURCE SPACE STUDY



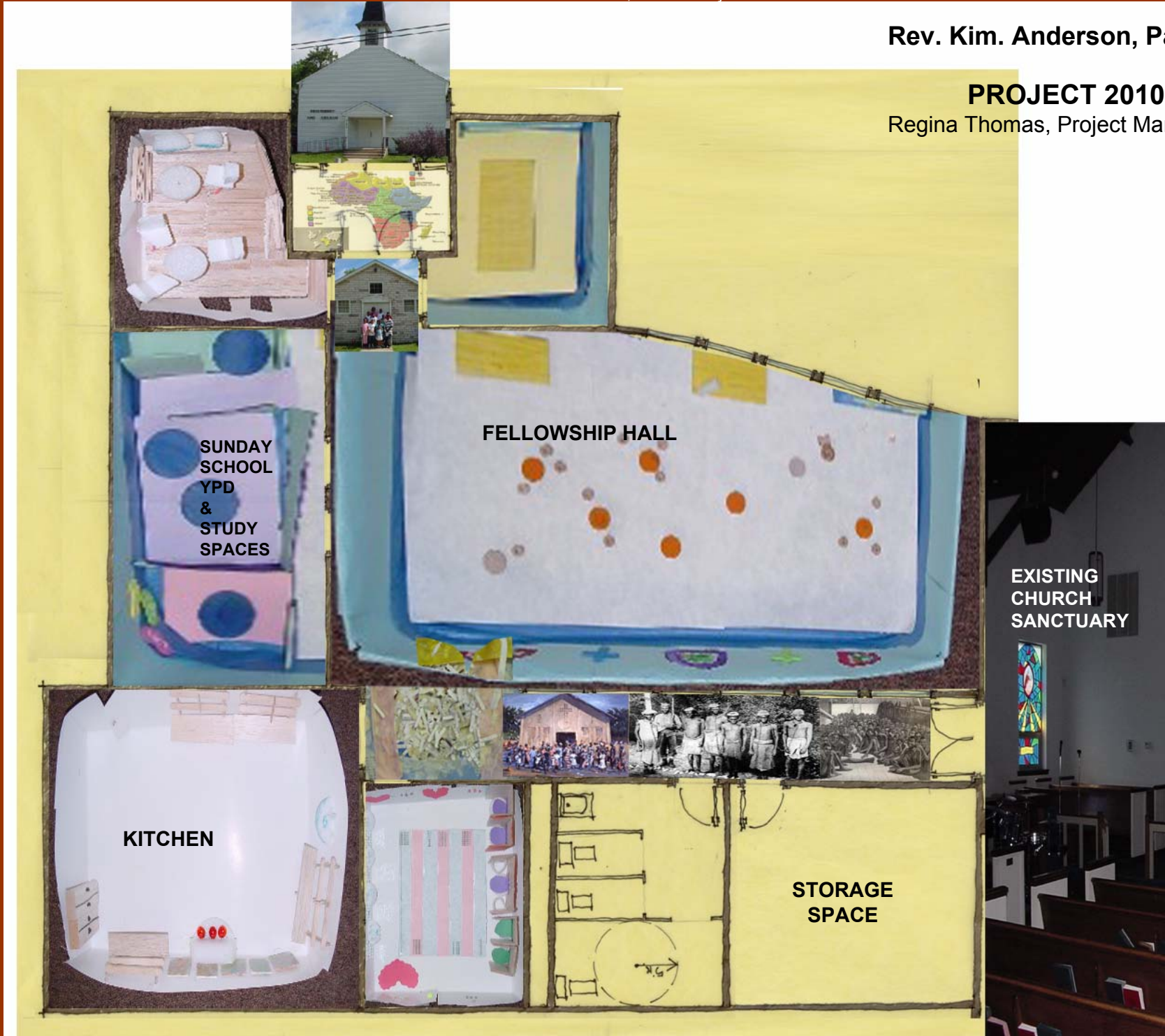
FELLOWSHIP HALL STUDY



FELLOWSHIP HALL STUDY



KITCHEN STUDY



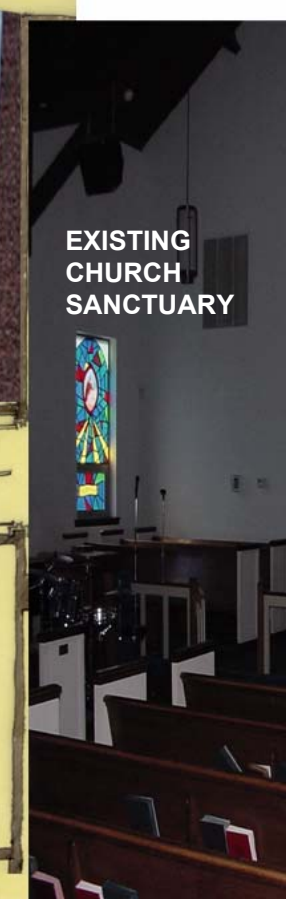
## CONCEPTUAL FLOOR PLAN with CREATIVE THINKING & SPACE VISUALIZATION



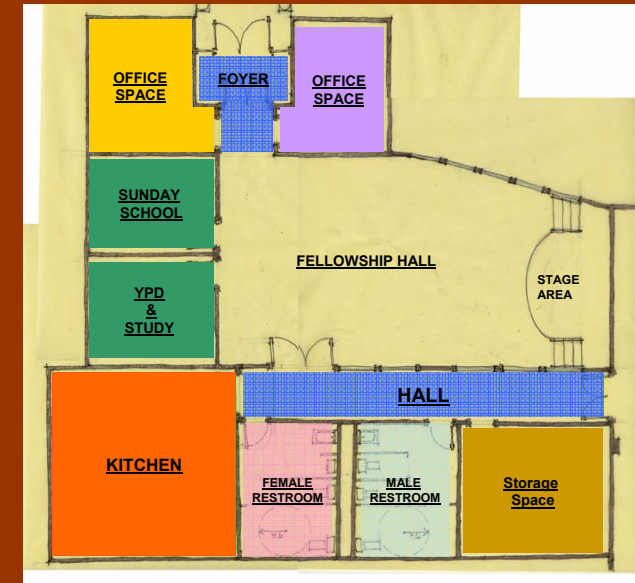
RESTROOM STUDY



RESTROOM STUDY



EXISTING CHURCH SANCTUARY



CONCEPTUAL FLOOR PLAN



### Project Scope:

The project scope was unique in that the students had to identify "who they are" in order to conduct the project design. The students were involved in an intensive ten (10) week research and design investigation that concluded with alternative design solutions for the Fellowship Hall, Kitchen, Male and Female Restrooms, Resource/Library Space, YPD, and Sunday School Spaces. The responsive design solutions include an investigation of the space its walls, ceilings, and floors.

The final project design involved maintaining as much as possible the existing building footprint. However, the existing building footprint was required to be increased in order to accommodate the following:

- New resource/library, YPD, Sunday school, Trustee Spaces and entrance foyer.
- New Fellowship Hall with a performance stage.
- New work teaching kitchen environment, handicap accessible male and female restrooms, and increased utility space.